

## MACHINE OPERATION MADE EASY BY THE USER-FRIENDLY SOFTWARE

The new mechanical configuration and the special automated adjustments of the shearing group lead to **incredible quality and speed**

### Total automation

All machine functions are driven by inverter controlled a.c. motors and controlled by:

- PLC programmable controller.
- Industrial computer with colour touch screen interface.

All shearing parameters can be set, stored and recalled to ensure reproducibility of the results desired.

### Automatic fabric tension control

The optimal fabric tension stored in the industrial computer is automatically controlled by a **load cell** allowing continuous shearing of any type of fabric (woven, knit, elastic) with minimum tension.



## SHEARING MACHINE

LAFER S.p.A.

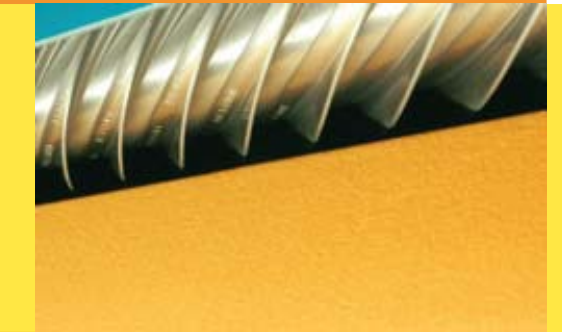
Via Lago di Garda, 98  
36015 Schio (VI) ITALY

Tel. +39 0445 694320  
Fax +39 0445 694333  
sales@laferspa.com

[www.laferspa.com](http://www.laferspa.com)

**CM1-100 DIABLO**

[www.integracom.it](http://www.integracom.it)



**Lafer**  
SPA  
ideas for better fabrics

## DOUBLE THE SHEARING SPEED, WHILE CUTTING NUMBER OF PASSES

The new Lafer concept changes everything. Not only is productivity significantly increased; also shearing quality is improved with less loss of weight

**Polar fleece (average and heavy weights)** sheared with only one pass against 2-3 passes previously required. Optimal shearing quality with soft and full hand. Even higher shearing speed possible if polar has been previously prepared on Lafer combing machine.

**Terry plush (velour) and terry towels** are sheared at high speed (at least 75% faster than conventional machines and with less loss of fabric weight).

**Warp knits in polyester for car seats** can be sheared at double the speed and can cut at least one shearing pass compared to conventional machines.

**Floating yarns on embroidered fabrics** sheared with higher precision and speed.

## LAFER SHEARING ROLL WITH EXCLUSIVE ANTIVIBRATION TECHNOLOGY

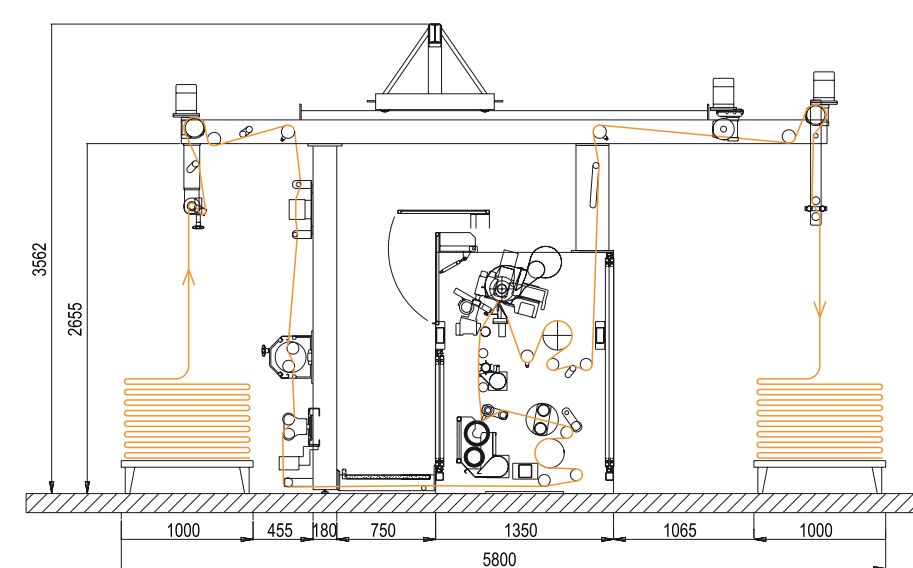
The shearing roll includes a special device that prevents vibration in order ensure maximum shearing precision.

The machine has been widened compared to the previous version to improve machine accessibility for fabric threading, cleaning and maintenance.

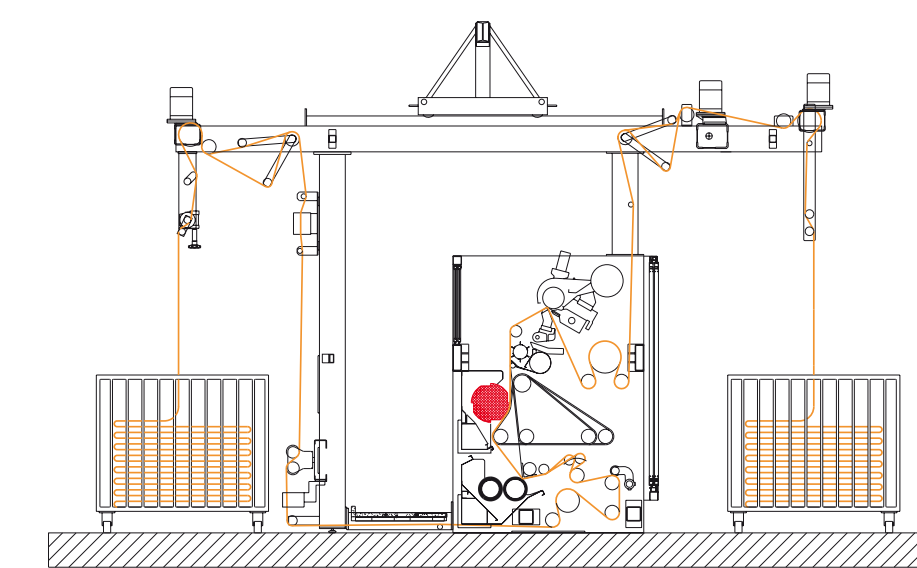
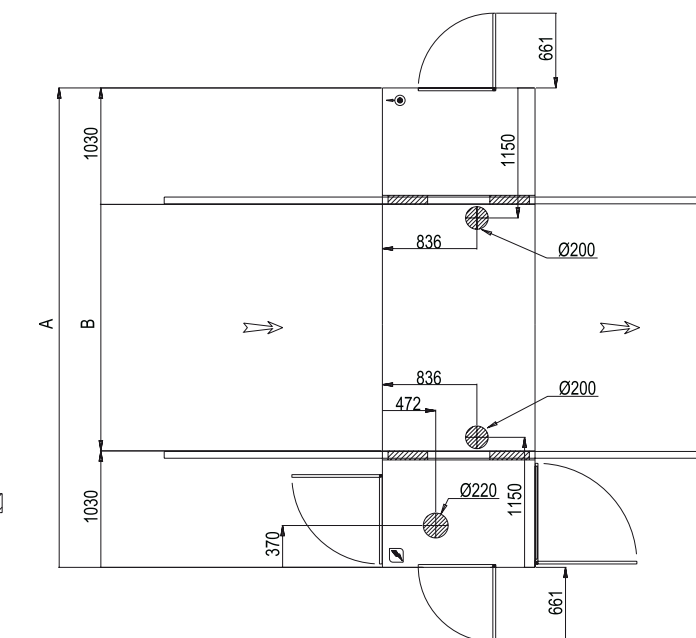
Shearing roll sharpening can be done in the machine itself.

## AVAILABLE ALSO WITH HEATED POLYTOR CYLINDER (PCL)

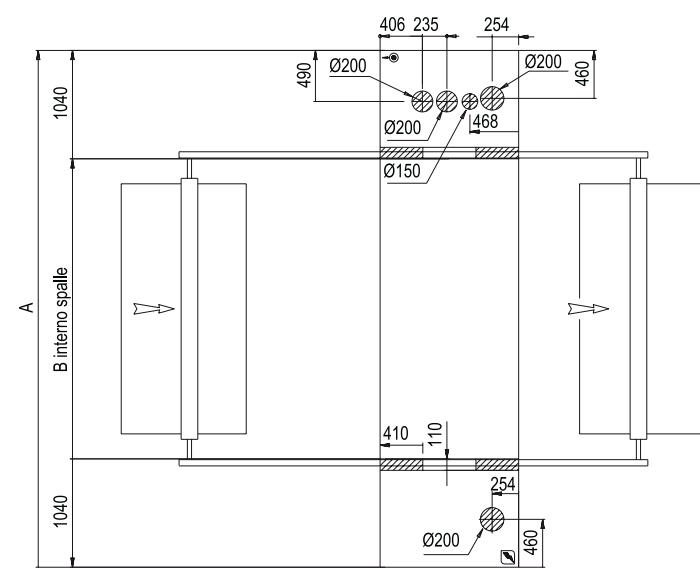
Suitable particularly for terry towel, blankets and certain qualities of terry plush velours and polar fleece to ensure a better orientation of the pile surface to be sheared, besides conferring enhanced lustre



Roller width	1900	2000	2200	2400	2600	2800	3000	3200	3400	3600
A	4300	4400	4600	4800	4800	5390	5590	5790	5990	5190
B	2440	2540	2740	2940	2940	3320	3520	3720	3920	4120



Roller width	2000	2200	2400	2600	2800
A	4560	4760	4960	5200	5400
B	2480	2680	2880	3120	3320



TECHNICAL SPECIFICATIONS	CMI-100	PCL
ROLLER WIDTH (mm)	1900-3600	2000-2800
INSTALLED ELECTRICAL POWER (Kw) (standard machine)	12-18	50
COMPRESSED AIR CONSUMPTION (litres/min)	60	60
MECHANICAL SPEED (m/min)	5-45	5-45
SHEARING ROLL SPEED RANGE (rpm)	500-1400 (H=2200)	500-1400 (H=2200)
VELVETTING BRUSH SPEED RANGE (rpm)	200-700	200-700
PCL POLISHING ROLL SPEED (rpm)	-	700-1000 (H=2200)

Technical specifications subject to change without notice